

FULL-E
CHARGED
TAIL TIDY

FITTING INSTRUCTIONS

Talaria TL45 / TL50 / TL60

INDEX

| | |
|-----------------------------|----|
| SUITABLE MODELS | 02 |
| TAIL TIDY FITTING GUIDE | 03 |
| MODIFYING ORIGINAL SUBFRAME | 08 |
| FITTING THE TAIL TIDY | 09 |
| WARRANTY CONDITIONS | 12 |



SUITABLE MODELS

This product is suitable
for the following models

-

Talaria Sting Road Legal
[TL45]

Talaria Sting R Road Legal
[TL50]

Talaria Sting R
[TL60]



FITTING GUIDE

This guide is designed for fitting the Full-E Charged Tail Tidy to the Talaria.
NOTE; Fitting will require modification to the rear lighting subframe.

Removing Original Tail Unit

It is recommended to remove the number plate bracket and under-tray before removing the rear assembly.

- 1.** Remove the two M5 x 11mm bolts and two M6 x 14mm bolts securing the unit to the rear fairing assembly and remove.



FITTING GUIDE

2. Remove the 5 bolts (M6 x 14mm) and 4 screws securing the under-tray to the machine and remove.



3. Disconnect the rear lighting cables from the main wiring harness, located above the battery compartment to the left of the machine.

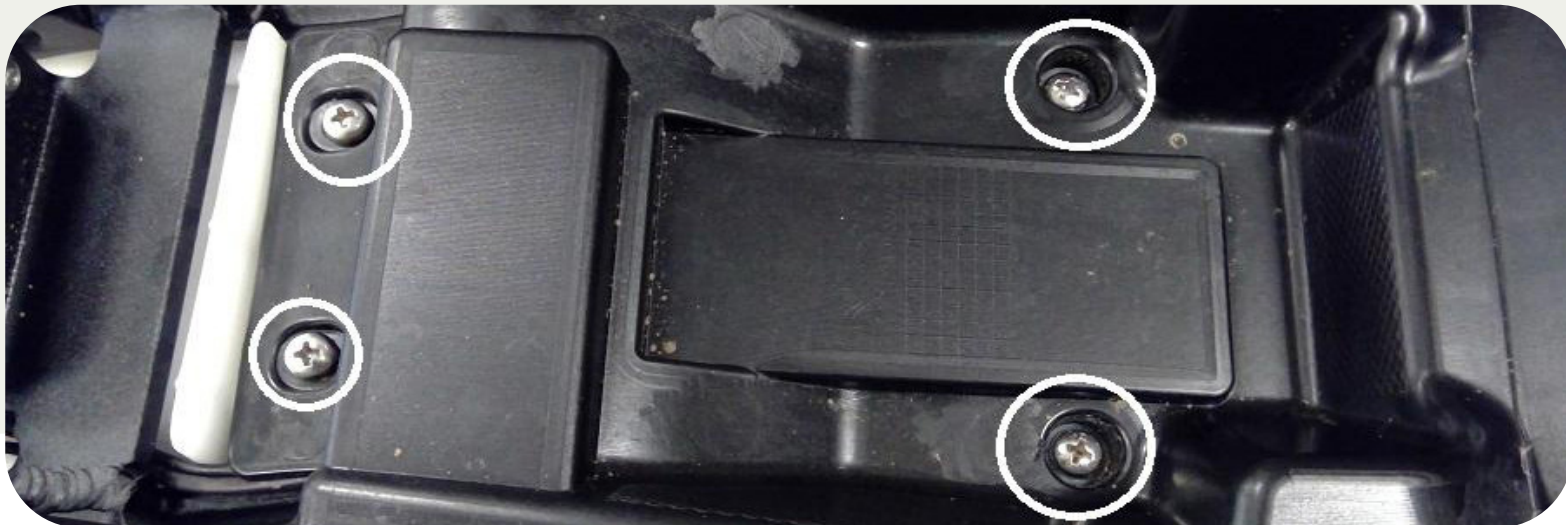


FITTING GUIDE

- 4.** Remove the 2 bolts (M6 x 10mm) from the fairing panel followed by the 4 bolts (M8 x 20mm) securing the assembly to the chassis.

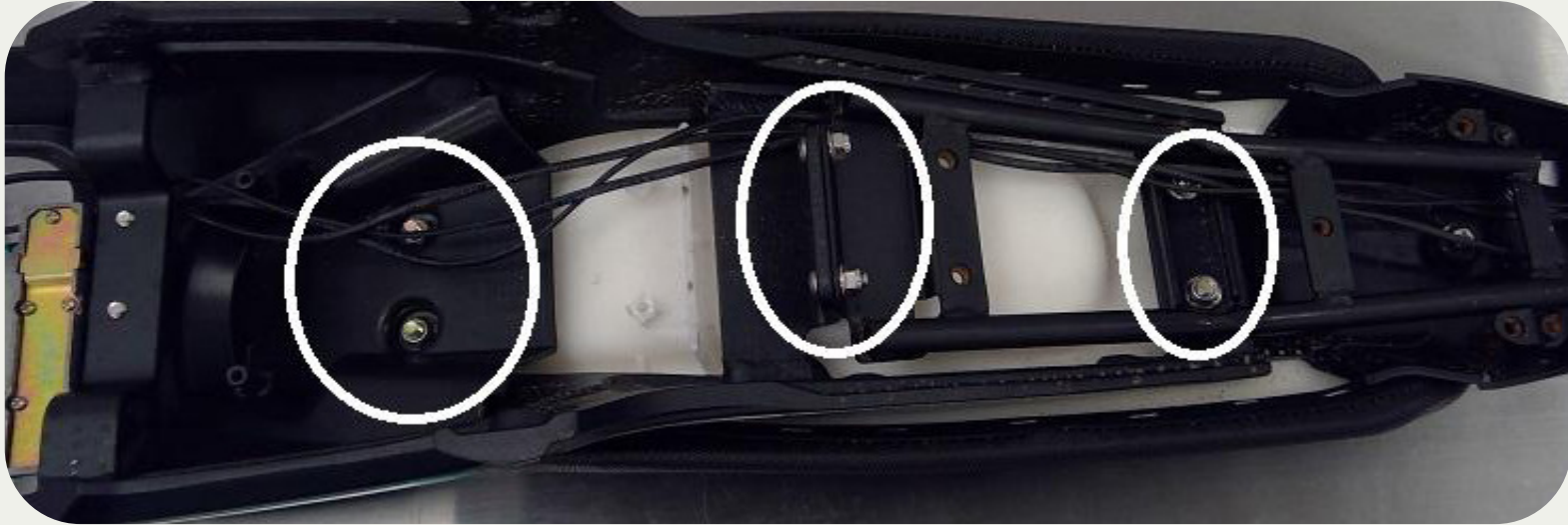


- 5.** Remove the seat under panel by removing the 4 screws securing it to the unit.
Note; this is necessary to be able to remove the seat from the assembly.



FITTING GUIDE

6. Remove the 6 nuts (M6, self locking) securing the seat to the rear assembly and remove the seat.



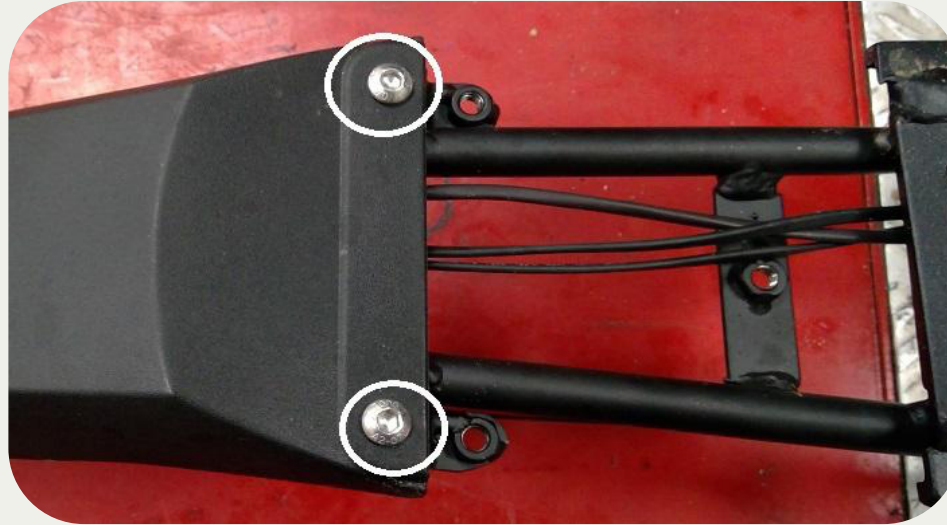
7. To separate the rear panel from the subframe, first remove the 2 screws securing the pieces together.

Note the routing of the rear lighting wiring



FITTING GUIDE

8. Turn the unit over and remove the 2 bolts (M6 x 14mm) securing the panel to the subframe and separate the pieces.



9. Separate the subframe halves by removing the 2 nuts and bolts (M6 x 16mm, self locking nuts) and separate the components.



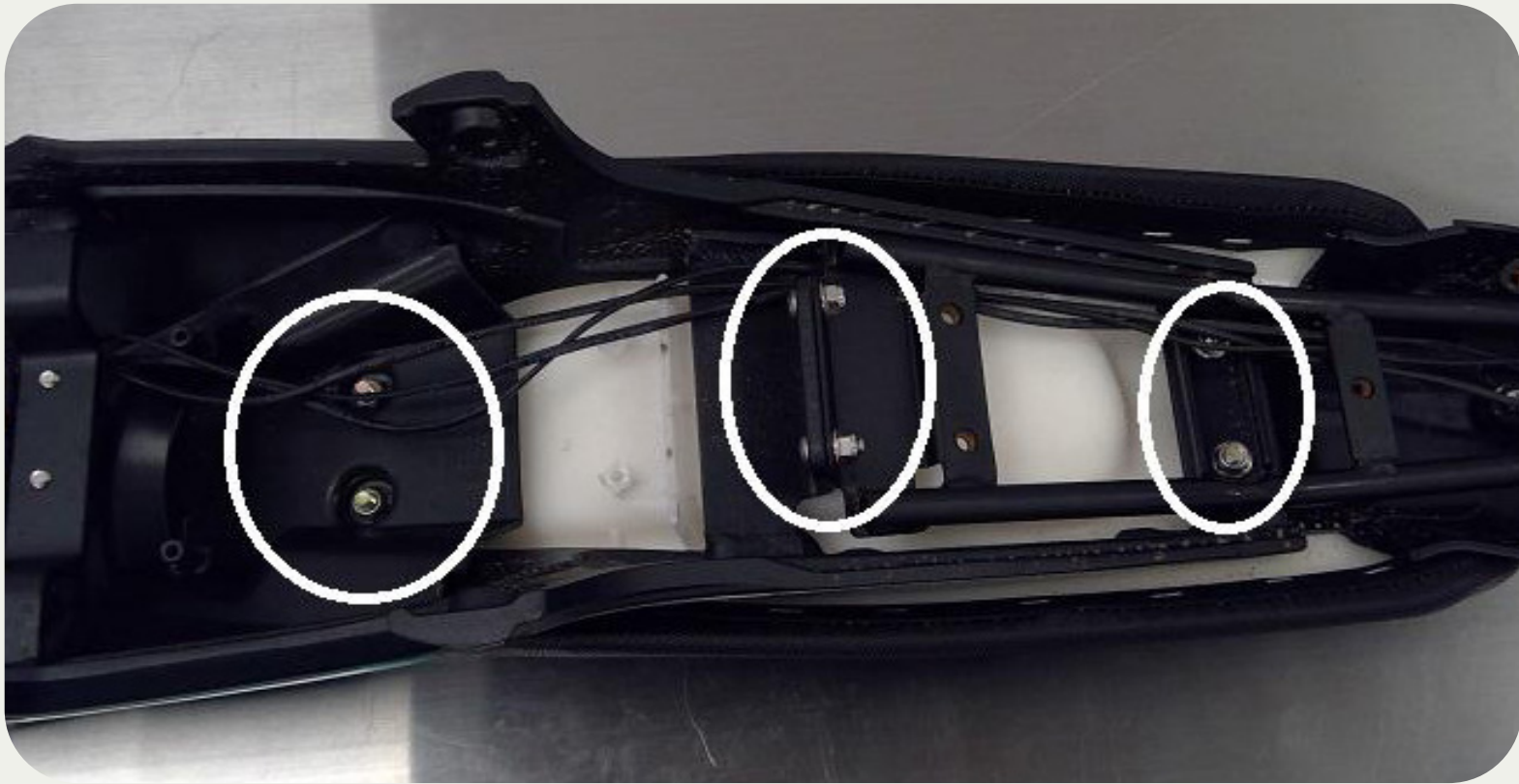
Modifying the Original Rear Subframe

In order to install the Tail Tidy you must make a PERMANENT modification to the rear lighting subframe. Once installed, should the user wish to return the machine to original condition, it will be necessary to purchase a replacement rear lighting subframe. This can be purchased from - <https://www.talariaebikeparts.com/part/MGB126>



Fitting the Tail Tidy

10. Re-fit the saddle and modified subframe to the chassis subframe and tighten the 6 x M6 self locking nuts/bolts to 7Nm



FITTING GUIDE

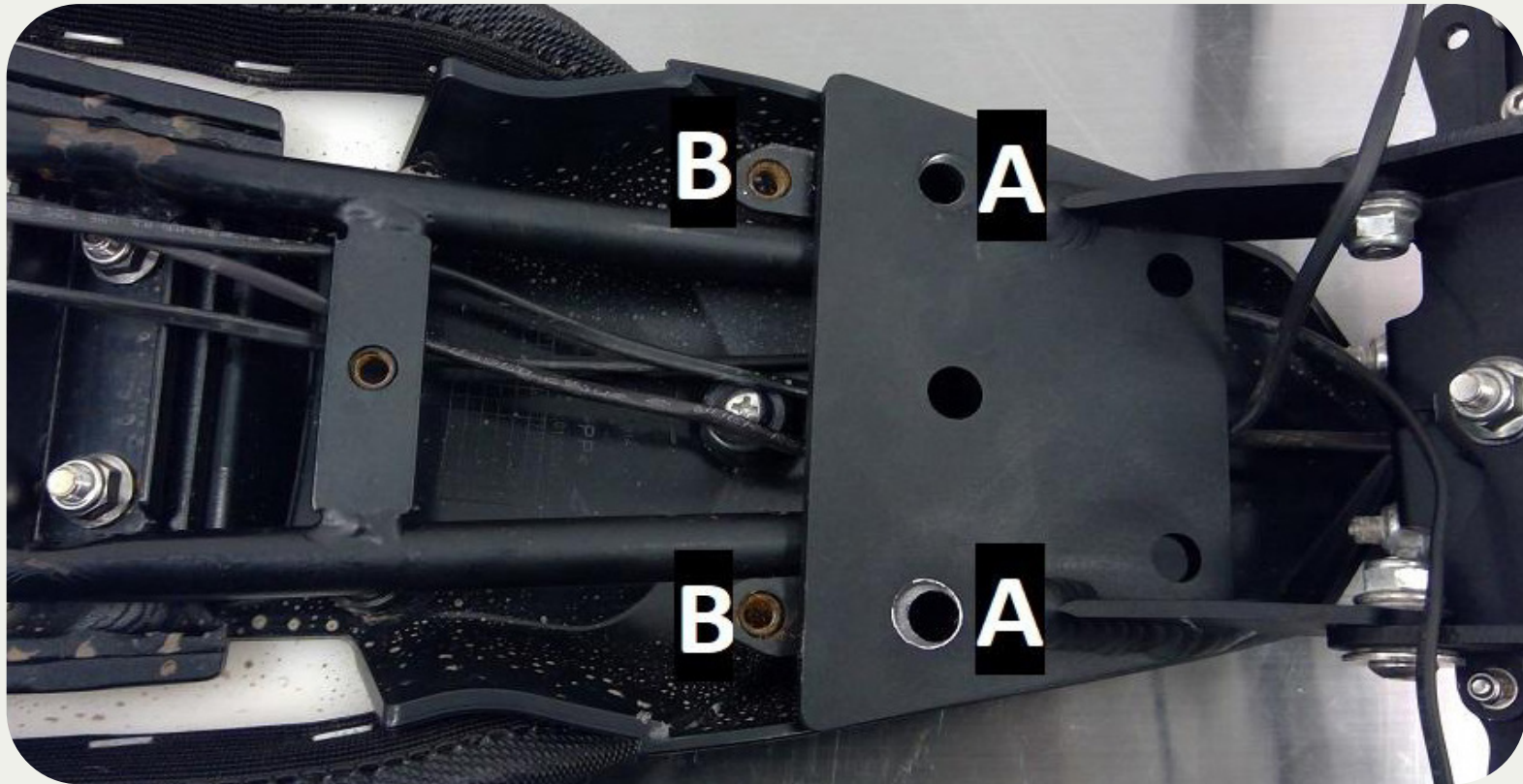
11. Assembly the tail tidy assembly including indicators and original rear light unit. It is recommended to fit the indicator brackets to the “front” of the tail tidy unit using the bolts provided to prevent interference when mounting the number plate.



Ensure the lighting wiring is fitted inside the modified subframe as shown before refitting the saddle underside cowling.



12. Install the tail tidy assembly to the modified subframe so that holes A align with holes B and install the M6 x 20mm bolts, tightening to 12Nm.





Warranty Conditions

1.1 Full-E Charged will warrant that the goods will be free from defects that would reduce their suitability for normal usage.

1.2 The product is given a warranty for a period of 12 months which begins when the goods are handed over to the consumer. Any defect notices will need to be notified to Full-E Charged using the contact us forms - (<https://www.fullecharged.co.uk/contact-us>). Full-E Charged will decide whether to replace or repair the goods.

1.3 The product must be checked upon delivery and any damage must be reported to the selling dealer or Full-E Charged within 48 hours. The same applies to faults that are discovered later.

1.4 If a repair is unsuccessful then the product must be replaced or refunded, this is at the discretion of Full-E Charged.

1.5 Full-E Charged will not be liable for consequential damage caused by a defect that has already been reported.